

K 4.00 ECO SILENT ALU *EU

| Materialnr. | Benennung | DOC |
|-------------|--|------------------------|
| 59577720 | Konformitaetserklaerung K3/K4-UPRIGHT 1. | CER-5183792-000-02.pdf |
| 59711290 | ETL K4.00 EcoSilent Alu | |
| 90001520 | SLP SK I/K130 | SLP-5097767-000-00.pdf |
| 59637000 | BTA K3/K4.00EcoSilent*EU 2010 | |
| 59638400 | BTA K4.00EcoS.ALU*EU / arabian | |

ETL K4.00 EcoSilent Alu

| Pos | Materialnr. | Benennung |
|-----|-------------|-----------|
|-----|-------------|-----------|

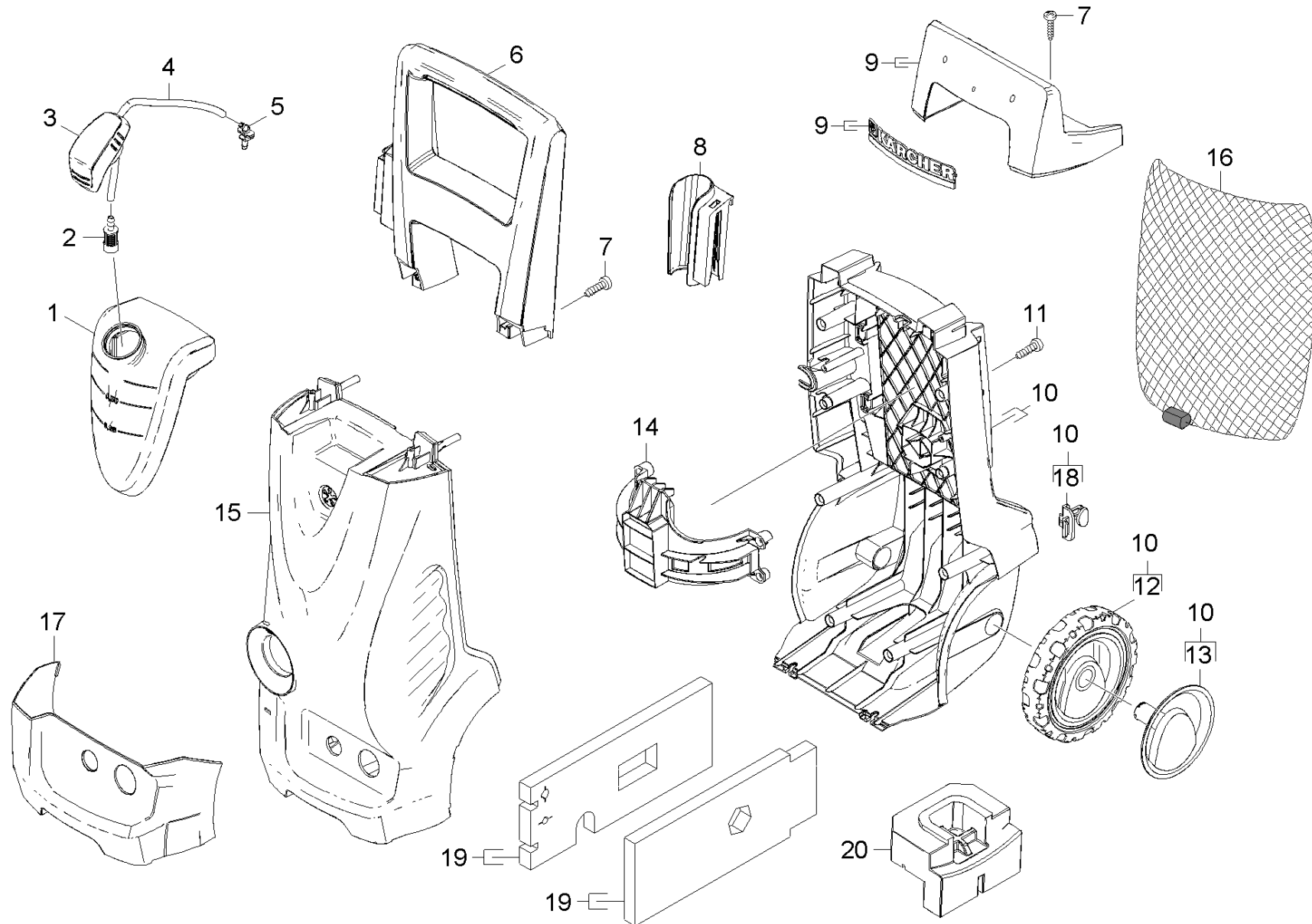
| | | |
|----|----------|----------|
| 10 | 01097150 | Gehaeuse |
|----|----------|----------|

| | | |
|----|----------|------------|
| 20 | 01097160 | Pumpensatz |
|----|----------|------------|

| | | |
|----|----------|-------|
| 30 | 01097190 | Motor |
|----|----------|-------|

| | | |
|----|----------|----------|
| 40 | 01097200 | Zubehoer |
|----|----------|----------|

| | | |
|----|----------|----------|
| 50 | 01097230 | E-Kasten |
|----|----------|----------|

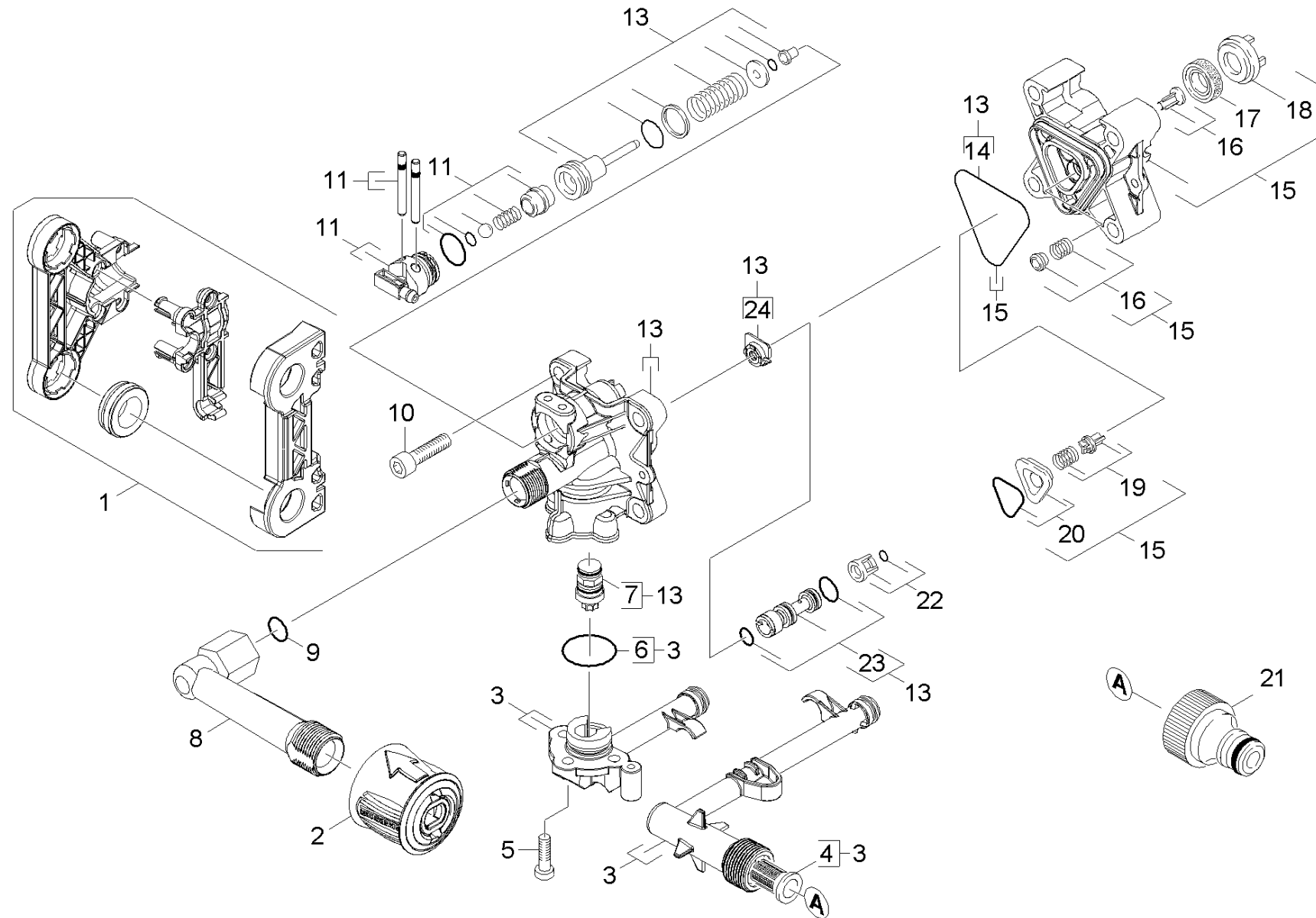


Gehaeuse

| ET/VT | Pos | Materialnr. | Benennung | Menge | ME | Fußnotentext |
|-------|-----|-------------|-------------------------------------|-------|----|-------------------------|
| | 1 | 90372470 | Tank K3.91 | 1 | ST | |
| X- | 2 | 57316520 | Filter mit Gewicht | 1 | ST | |
| | 3 | 90480800 | Tankdeckel | 1 | ST | |
| | 4 | 63882160 | Schlauch DN 5 | 1 | M | ALS METERWARE BESTELLEN |
| | 5 | 90372620 | Nippel RM | 1 | ST | |
| | 6 | 90372460 | Griff K3.91 | 1 | ST | |
| | 7 | 90862030 | Schraube 4x22 | 4 | ST | |
| | 8 | 53219040 | Halter Pistole | 1 | ST | |
| | 9 | 90017010 | Schlauchhalter kpl. | 1 | ST | |
| | 10 | 90124720 | Chassis hinten kpl. -K4 low noise | 1 | ST | |
| | 11 | 90861730 | Schraube Hi-Lo d.4x22 Torx-d.7,5 | 10 | ST | |
| | 12 | 45152830 | Radsatz Ersatz 160 Parabel | 1 | ST | |
| | 13 | 45152900 | Blende fuer Ersatz 160 Parabel | 1 | ST | |
| | 14 | 90375470 | Flansch Motor K3/K4 Low noise | 1 | ST | |
| | 15 | 90017000 | Haube neutral | 1 | ST | |
| | 16 | 62760450 | Zubehoer Netz | 1 | ST | |
| | 17 | 90375510 | Bumper schwarz K3/K4 Low noise | 1 | ST | |
| X- | 18 | 90376440 | Haken Netz | 6 | ST | |
| | 19 | 90017160 | ET-Satz Schallschutz 3 | 1 | ST | |
| | 20 | 90480880 | Schwingungsdaempfer K3/K4 Low noise | 1 | ST | |

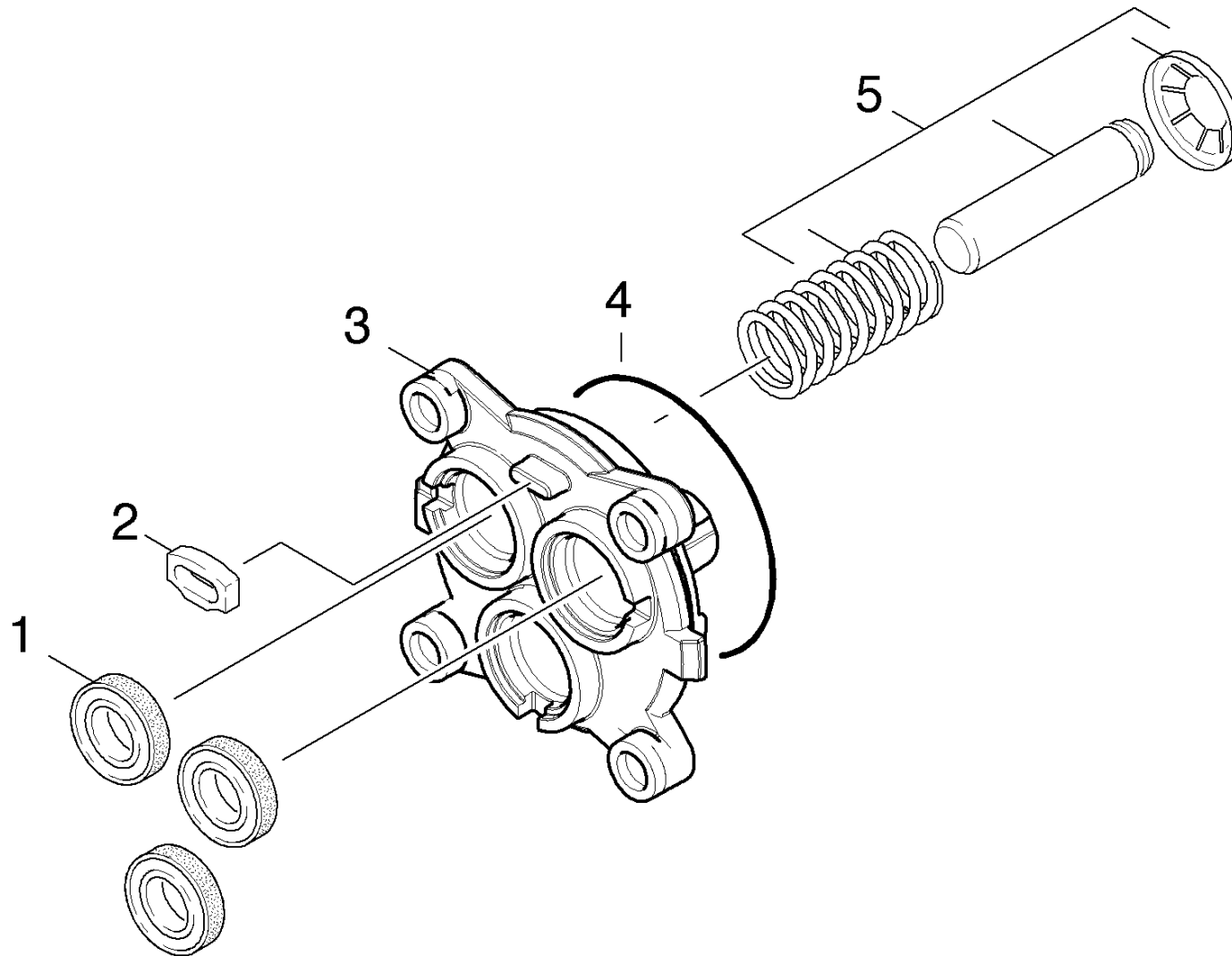
Pumpensatz

| Pos | Materialnr. | Benennung | Menge | ME |
|-----|-------------|--------------------|-------|----|
| 21 | 01097170 | Steuergehaeuse | 1 | ST |
| 22 | 01097180 | Geradschubfuehrung | 1 | ST |



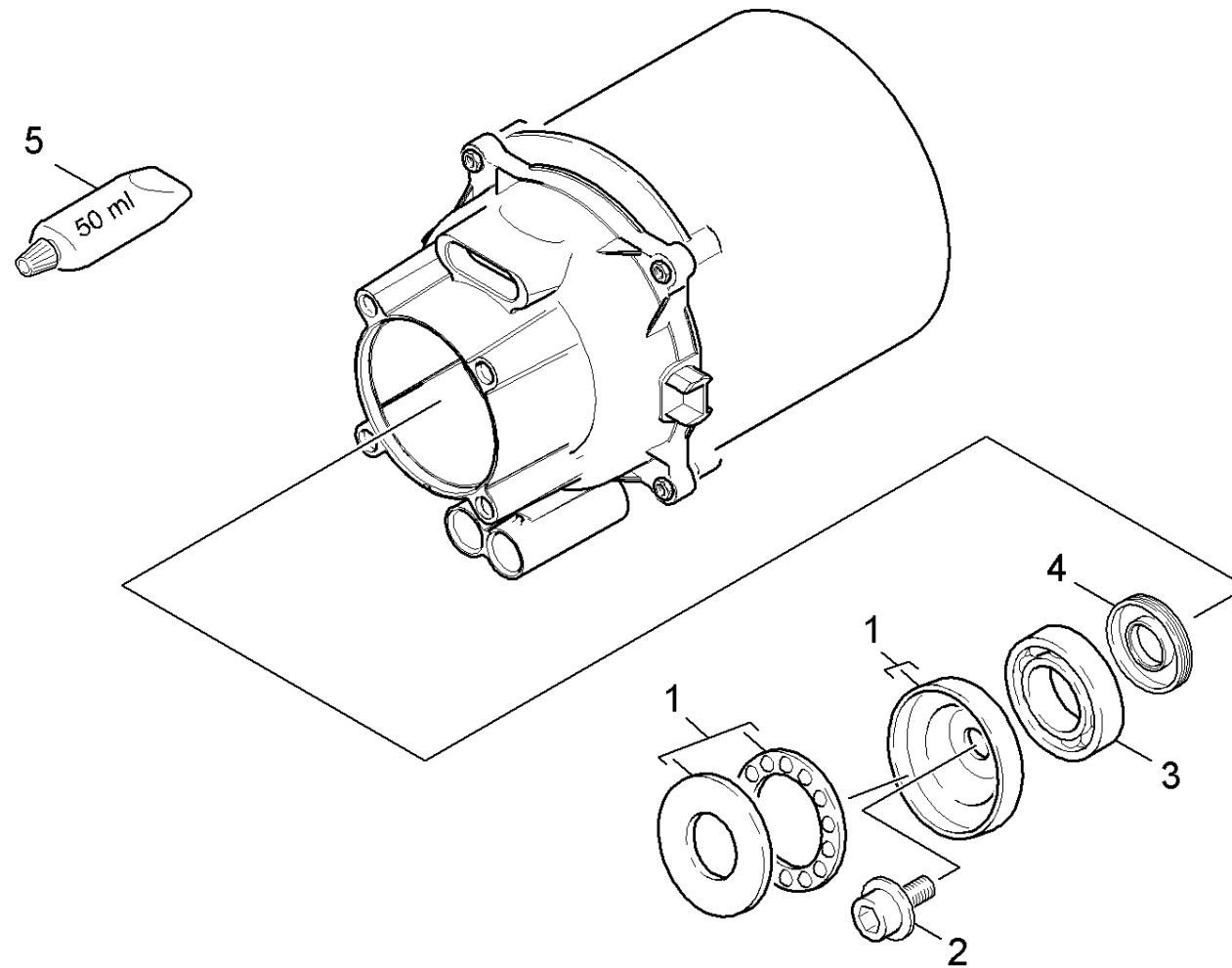
Steuergehaeuse

| ET/VT | Pos | Materialnr. | Benennung | Menge | ME | ab WK Nr. | bis WK.Nr. |
|-------|-----|-------------|----------------------------------|-------|----|------------|------------|
| | 1 | 90017440 | ET-Satz Schallschutz | 1 | ST | 0000000000 | 0000000000 |
| | 2 | 44700410 | HD-Schnellkupplung AL | 1 | ST | 0000000000 | 0000000000 |
| X- | 3 | 90017960 | ET-Satz Saugseite | 1 | ST | | |
| | 4 | 57315980 | Feinfilter | 1 | ST | 0000000000 | 0000000000 |
| | 5 | 90861990 | Schraube | 3 | ST | 0000000000 | 0000000000 |
| | 6 | 90814170 | O-Ring 20 x 2 | 1 | ST | 0000000000 | 0000000000 |
| | 7 | 90012810 | Bypassventil | 1 | ST | 0000000000 | 0000000000 |
| | 8 | 40258940 | HD-Abgang kpl. K5.91M | 1 | ST | 0000000000 | 0000000000 |
| | 9 | 63621510 | O-Ring 10 x 2 NBR 70 | 1 | ST | 0000000000 | 0000000000 |
| | 10 | 73061510 | Zyl.Schr. M8x65 -8.8-A2E ISO4762 | 4 | ST | 0000000000 | 0000000000 |
| | 11 | 90012770 | ET-Satz Chemie | 1 | ST | 0000000000 | 0000000000 |
| | 13 | 90018000 | Ersatzteilsatz Steuerkopf | 1 | ST | 0000000000 | 0000000000 |
| | 14 | 90814240 | Formdichtung | 1 | ST | 0000000000 | 0000000000 |
| | 15 | 90012740 | Ersatzteilsatz Steuerkopf | 1 | ST | 0000000000 | 0000000000 |
| | 16 | 90011100 | Formteil kpl. | 1 | ST | 0000000000 | 0000000000 |
| | 17 | 63628750 | Nutring | 3 | ST | 0000000000 | 0000000000 |
| | 18 | 90370590 | Stuetzring | 3 | ST | 0000000000 | 0000000000 |
| | 19 | 90012750 | Ventil Set | 1 | ST | 0000000000 | 0000000000 |
| | 20 | 90012760 | Verbindungsstueck | 1 | ST | 0000000000 | 0000000000 |
| | 21 | 63898700 | Anschluss 3/4" | 1 | ST | 0000000000 | 0000000000 |
| | 22 | 90118120 | Kaefig kpl. | 1 | ST | 0000000000 | 0000000000 |
| | 23 | 47690350 | Dueseneinsatz | 1 | ST | 0000000000 | 0000000000 |
| | 24 | 90371420 | Abstandshalter | 1 | ST | 0000000000 | 0000000000 |



Geradschubfuehrung

| Pos | Materialnr. | Benennung | Menge | ME | Fußnotentext |
|-----|-------------|-------------------------|-------|----|--------------|
| 1 | 69640260 | Nutring | 3 | ST | |
| 2 | 90480710 | Dichtung | 1 | ST | |
| 3 | 90420850 | Geradschubfuehrung Alu | 1 | ST | |
| 4 | 90804260 | O-Ring 62x3 NBR 70Shore | 1 | ST | |
| 5 | 90017270 | Kolben kpl. | 1 | ST | 3 STUECK |

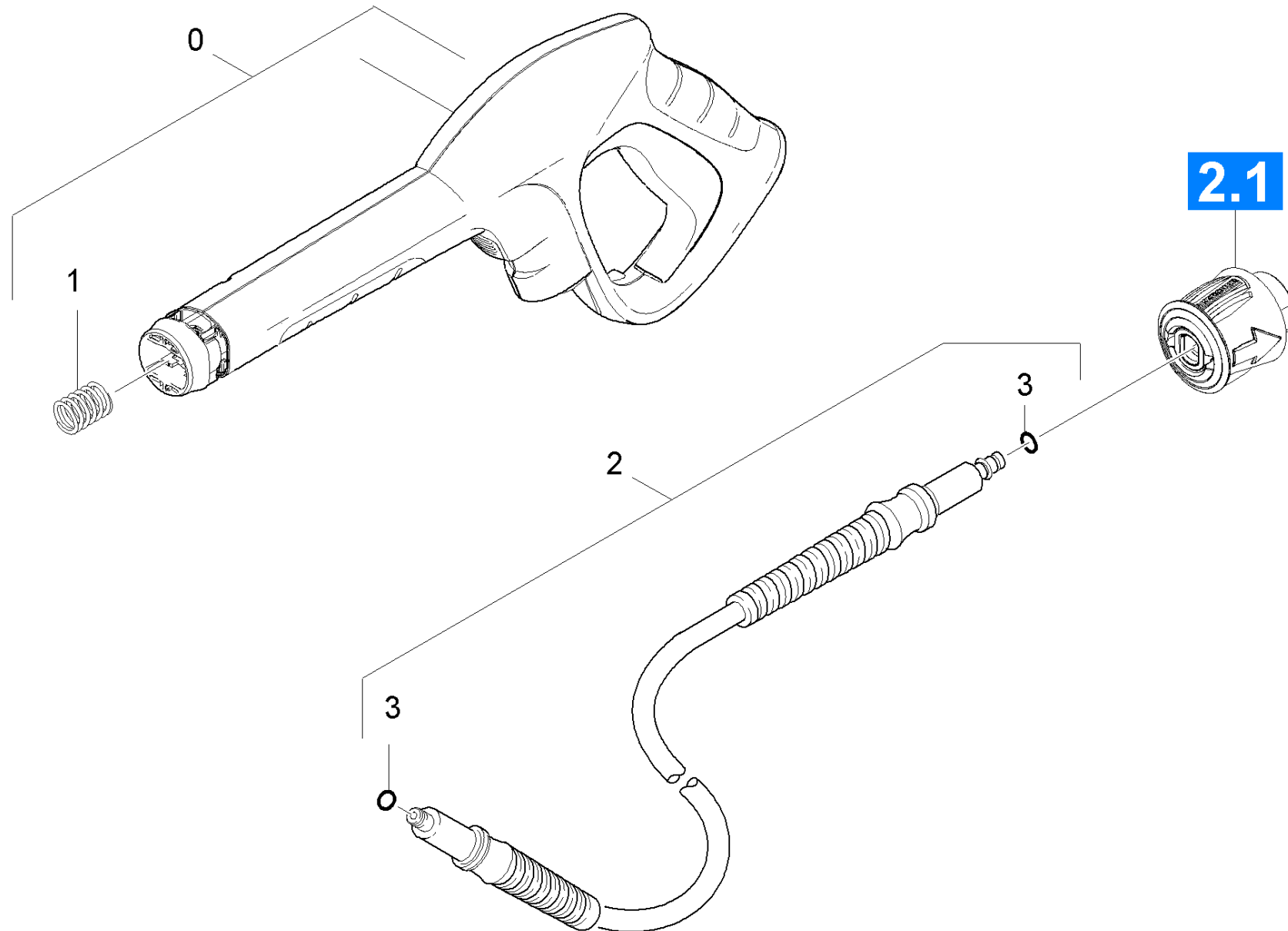


Motor

| Pos | Materialnr. | Benennung | Menge | ME |
|-----|-------------|-----------------------------|-------|----|
| 1 | 90016710 | Taumelscheibe | 1 | ST |
| 2 | 90862050 | Schraube | 1 | ST |
| 3 | 74010100 | Kugellager 6303 -St DIN 625 | 1 | ST |
| 4 | 90780070 | Wellendichtring 17x35x5 | 1 | ST |
| 5 | 69640920 | Fliessfett 50ml | 1 | ST |

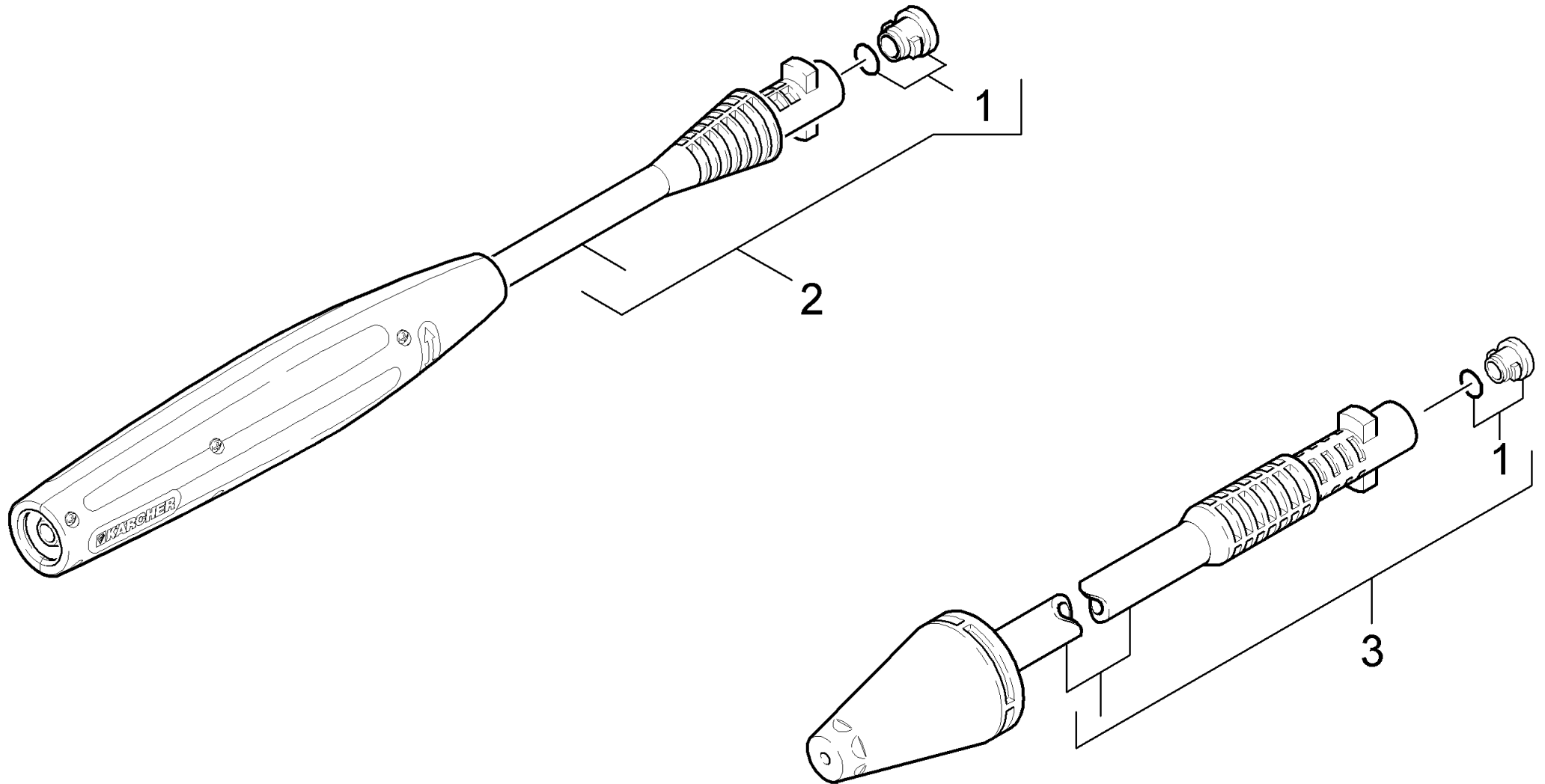
Zubehoer

| Pos | Materialnr. | Benennung | Menge | ME |
|-----|-------------|-------------------|-------|----|
| 41 | 01097210 | Handspritzpistole | 1 | ST |
| 42 | 01097220 | Strahlrohr | 1 | ST |



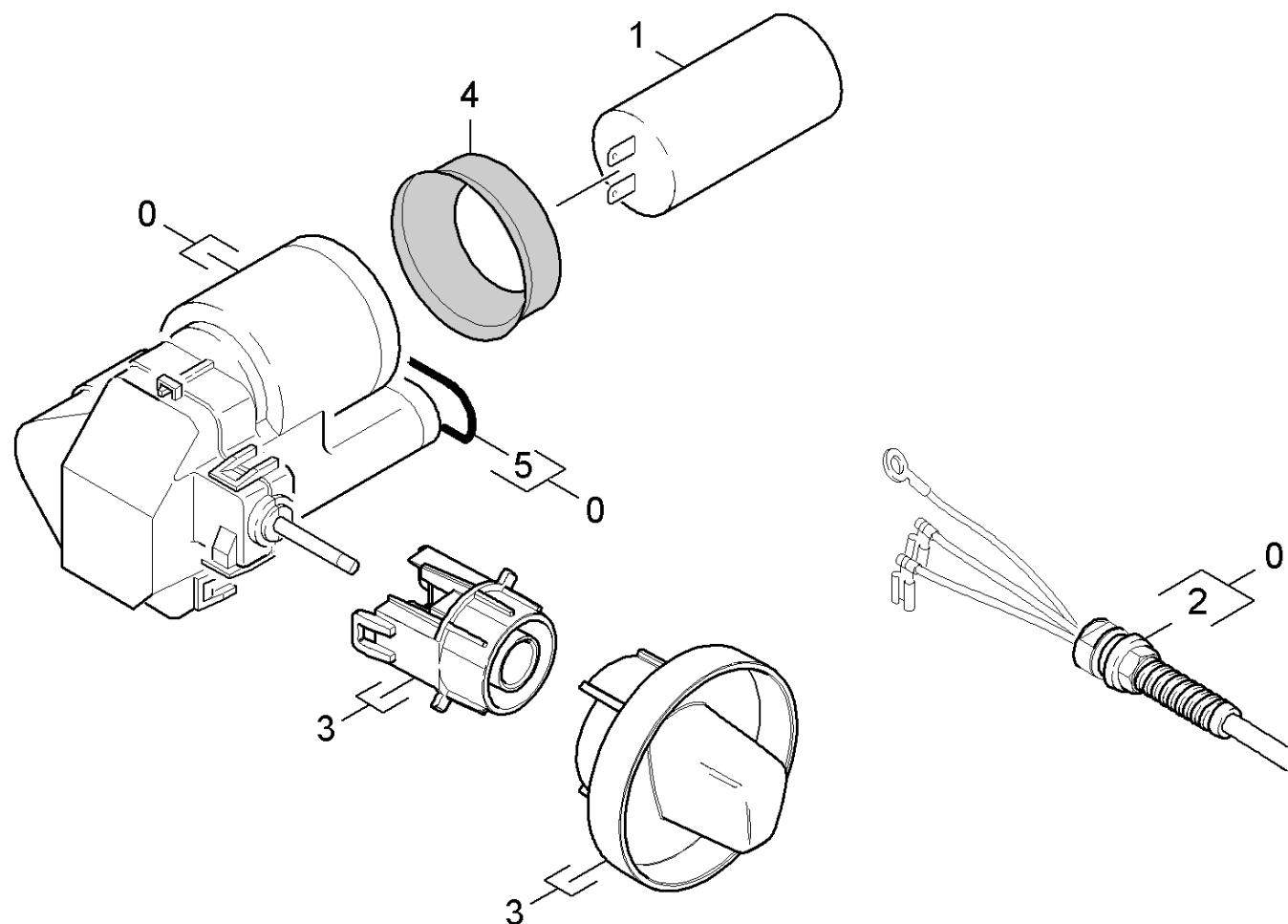
Handspritzpistole

| Pos | Materialnr. | Benennung | Menge | ME |
|-----|-------------|------------------------------|-------|----|
| 0 | 26416100 | Pistole best Ersatz verpackt | 1 | ST |
| 1 | 53324640 | Druckfeder | 1 | ST |
| 2 | 26417210 | HD-Schlauch 9/160 verp. | 1 | ST |
| 3 | 63634100 | O-Ring 5,7x1,78 NBR 90Shore | 1 | ST |



Strahlrohr

| Pos | Materialnr. | Benennung | Menge | ME |
|-----|-------------|-----------------------------------|-------|----|
| 1 | 26407290 | O-Ring Set | 1 | ST |
| 2 | 47605340 | VPS K3 0287 | 1 | ST |
| 3 | 47632280 | Rotorduese 035 Clas.Line verpackt | 1 | ST |



E-Kasten

| Pos | Materialnr. | Benennung | Menge | ME |
|-----|-------------|--------------------------------------|-------|----|
| 0 | 90016070 | E-Kasten | 1 | ST |
| 1 | 90850130 | Kondensator 25mF | 1 | ST |
| 2 | 90841390 | Kabel mit Stecker *EU | 1 | ST |
| 3 | 90017150 | ET-Satz Schallschutz 2 | 1 | ST |
| 4 | 90804650 | Dichtring Kondensator d.45, 70 Shore | 1 | ST |
| 5 | 90814170 | O-Ring 20 x 2 | 1 | ST |