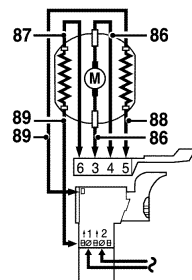


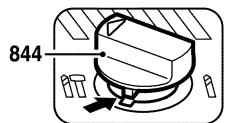
0 603 356 760

Issue
Stand 02-06-17

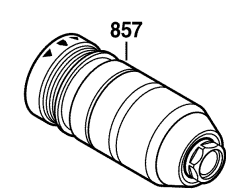
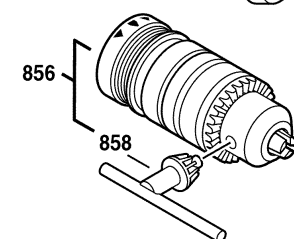
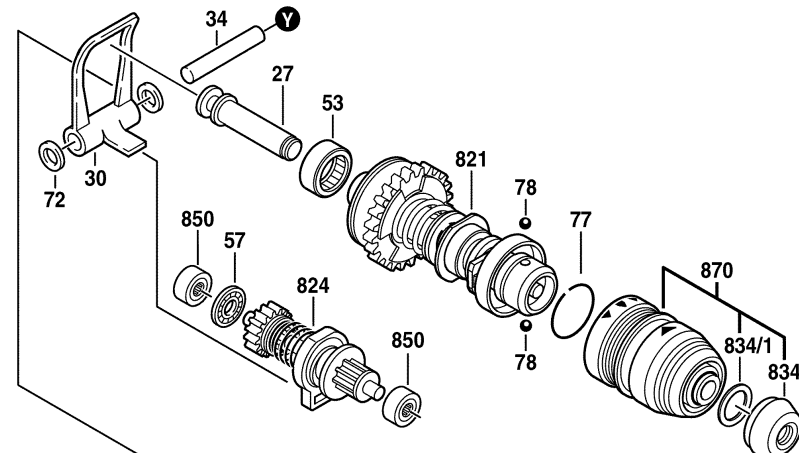
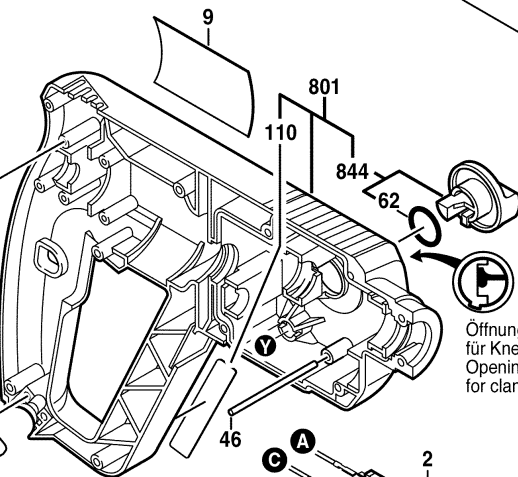
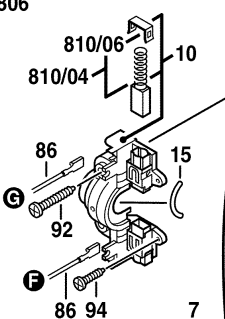
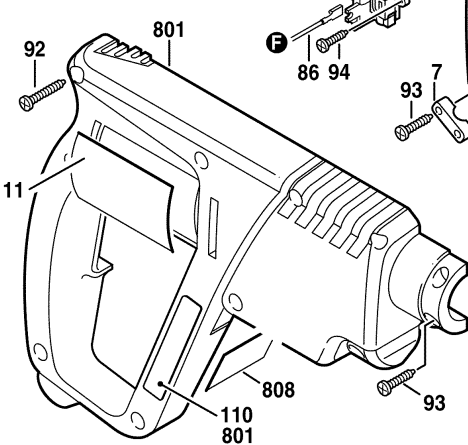
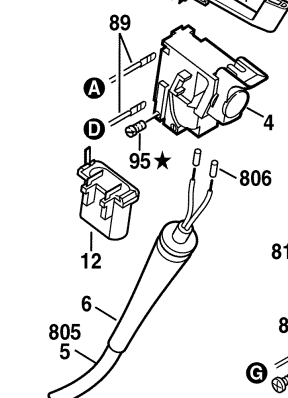
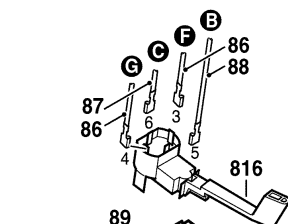
Fig./Abb. 1



★ mit Loctite 222 sichern
secure with Loctite 222



Demontage / Montage
Disassembly / Assembly
Demontage / Montage
Desmontar / Montaje



Pos. 14 +17
für Fertigung
for manufacture
pour fabrication
para fabricación

Pos. 814
für Ersatzteil
for spare parts
pour piece de rechange
para pieza de recambio

Änderungen vorbehalten
Modifications reserved
Modifications réservées
Salvo modificaciones

Öffnung im Motorgehäuse 801
für Knebelgriff 844
Opening in motorhousing 801
for clamp handle 844

Änderungen vorbehalten
Modifications reserved
Modifications réservées
Salvo modificaciones