

190400 to 190499

Illustrated Parts List

Model Series 190400 to 190499

TYPE NUMBERS
0010 through 0070
0110 through 0193
0510 through 0571
0610 through 1026

TO FIND

THE CORRECT NUMBER OF THE PART YOU NEED:

FOLLOW THE INSTRUCTIONS BELOW

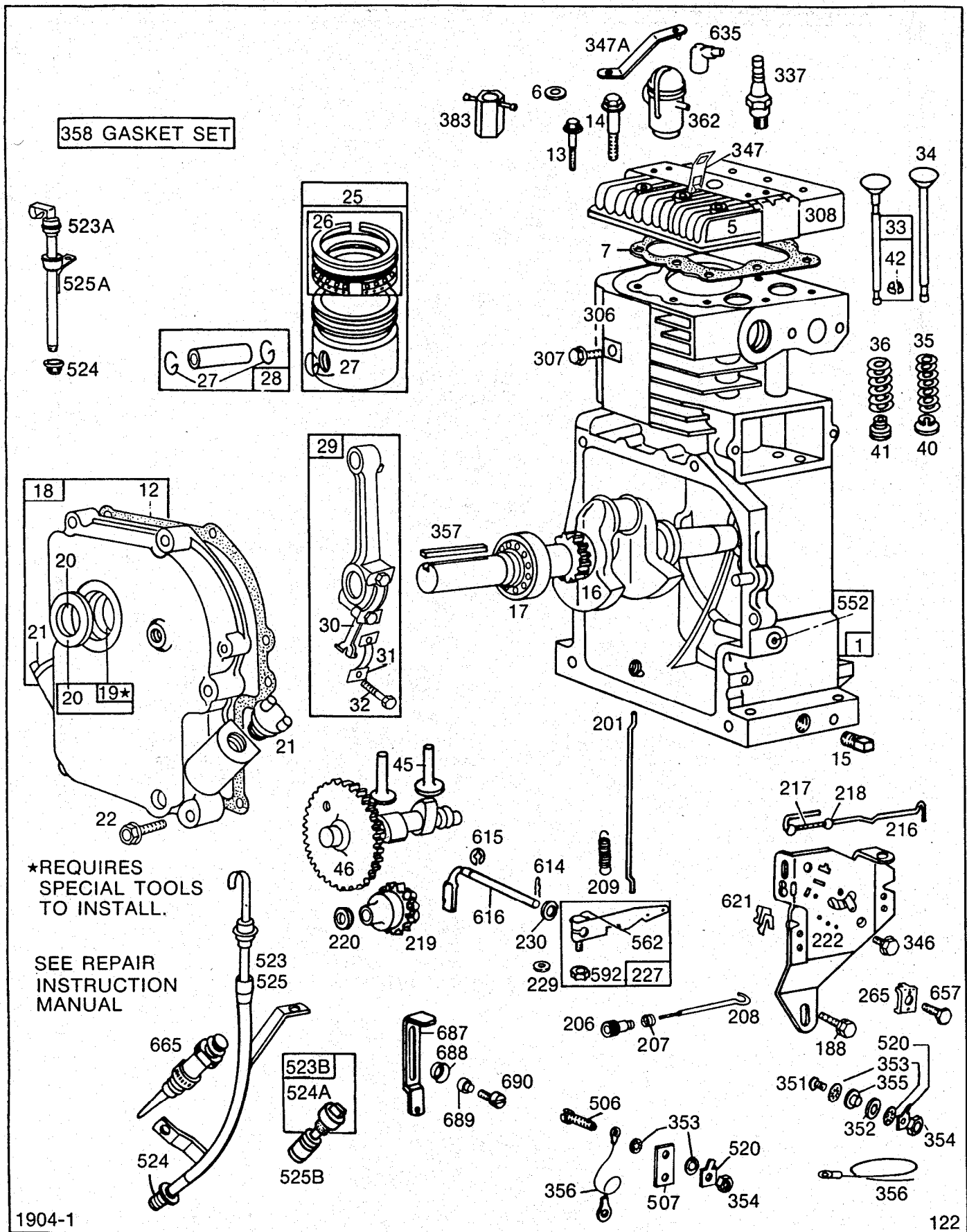
- A. Refer to Engine Model, Type and Code Number that is stamped on the blower housing of engine. Engine type numbers such as 012301 are listed herein only as 0123. The two digits (01 or 02, etc.) to the right of the space are not needed for parts identification. Then use the Illustrated Parts List covering the Model Series.
- B. Refer to Illustrated Parts section and compare the old part with illustration. The number on the illustration is the Reference Number. Assemblies include all parts shown in frames. All parts shown in assembly frames on which individual reference numbers are given can be purchased separately.
- C. After the Reference Number has been identified, refer to the Numerical Parts List, where Reference and Master Part Number are listed. **THE MASTER PART IS USED ON ALL TYPE NUMBERS EXCEPT THOSE TYPE NUMBERS UNDER "NOTE".**
- D. If a "Note" appears below the Master Part Number, this means that this part differs from the Master Part for certain types. If the Type number is listed under "Note", order the part referred to.
- E. If the Engine Type Number does not appear after any part number listed under "Note", use the Master Part Number.
- F. For Type Numbers higher than those covered by this book, please refer to the factory if you are unable to identify the part by comparison.

PRINTED IN U.S.A.

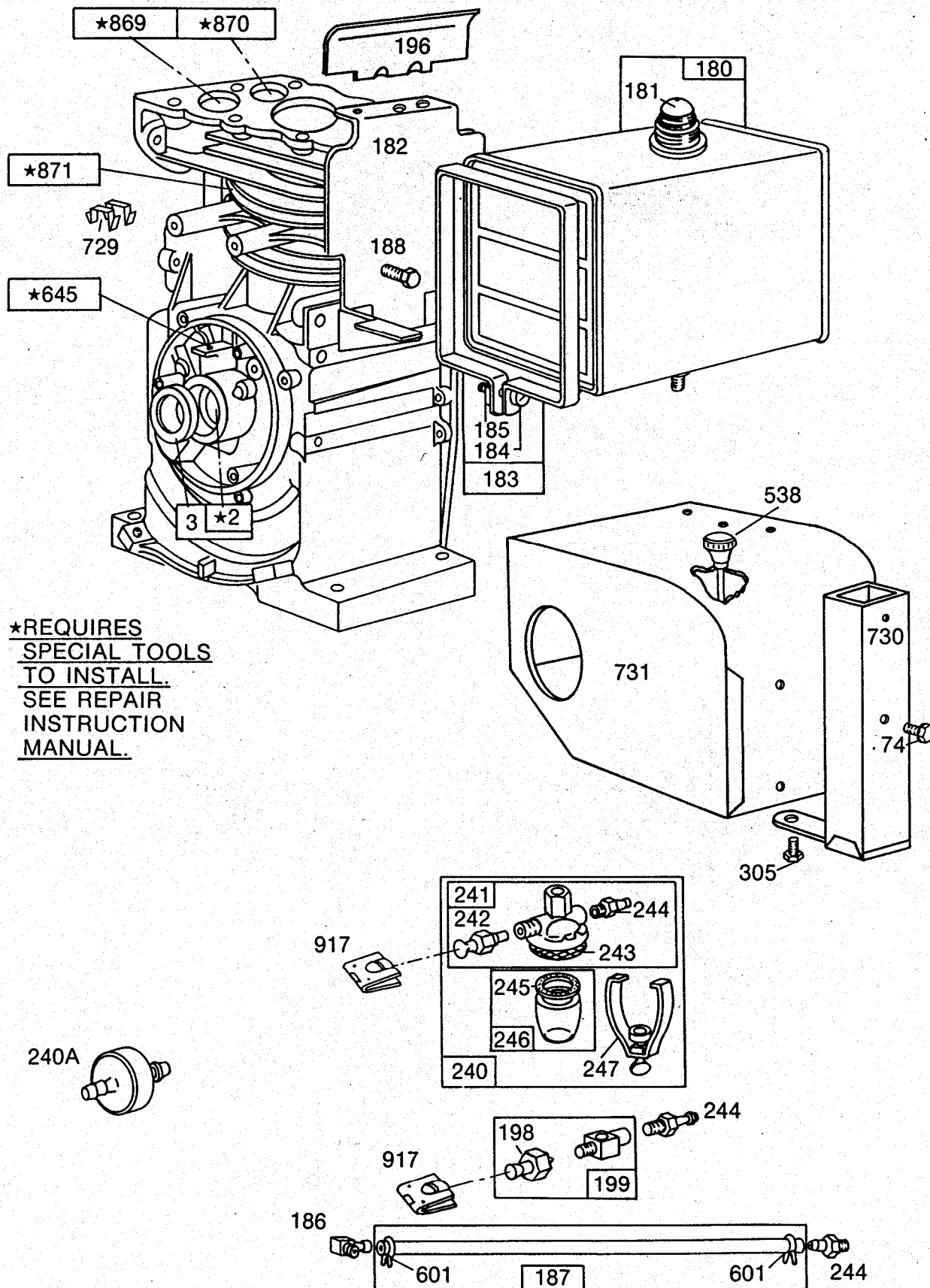


COPYRIGHT©

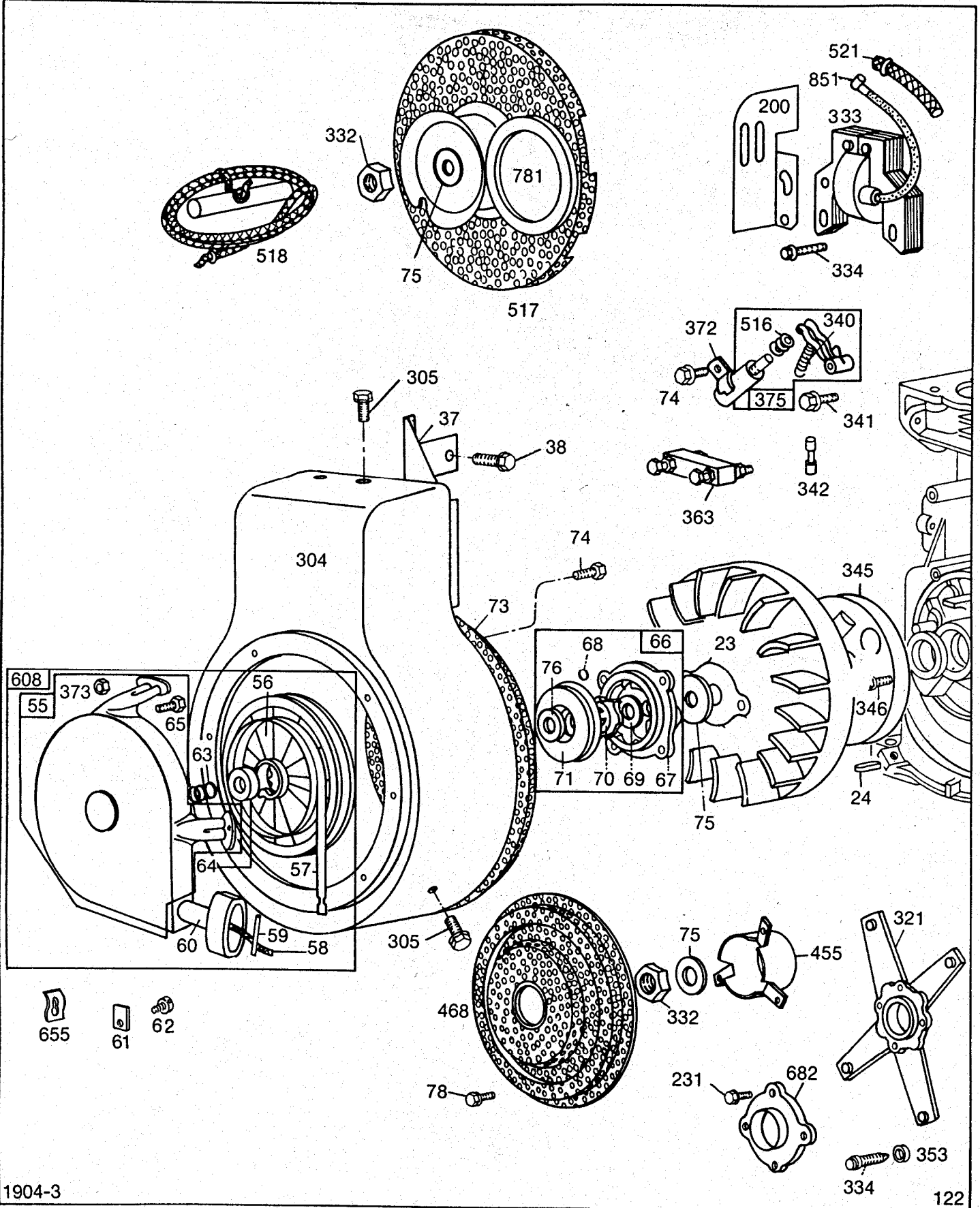
190400 to 190499



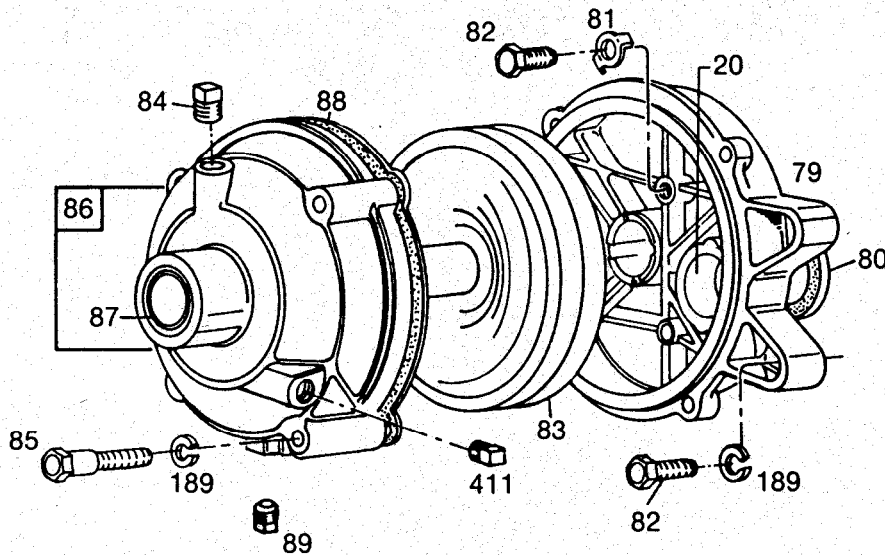
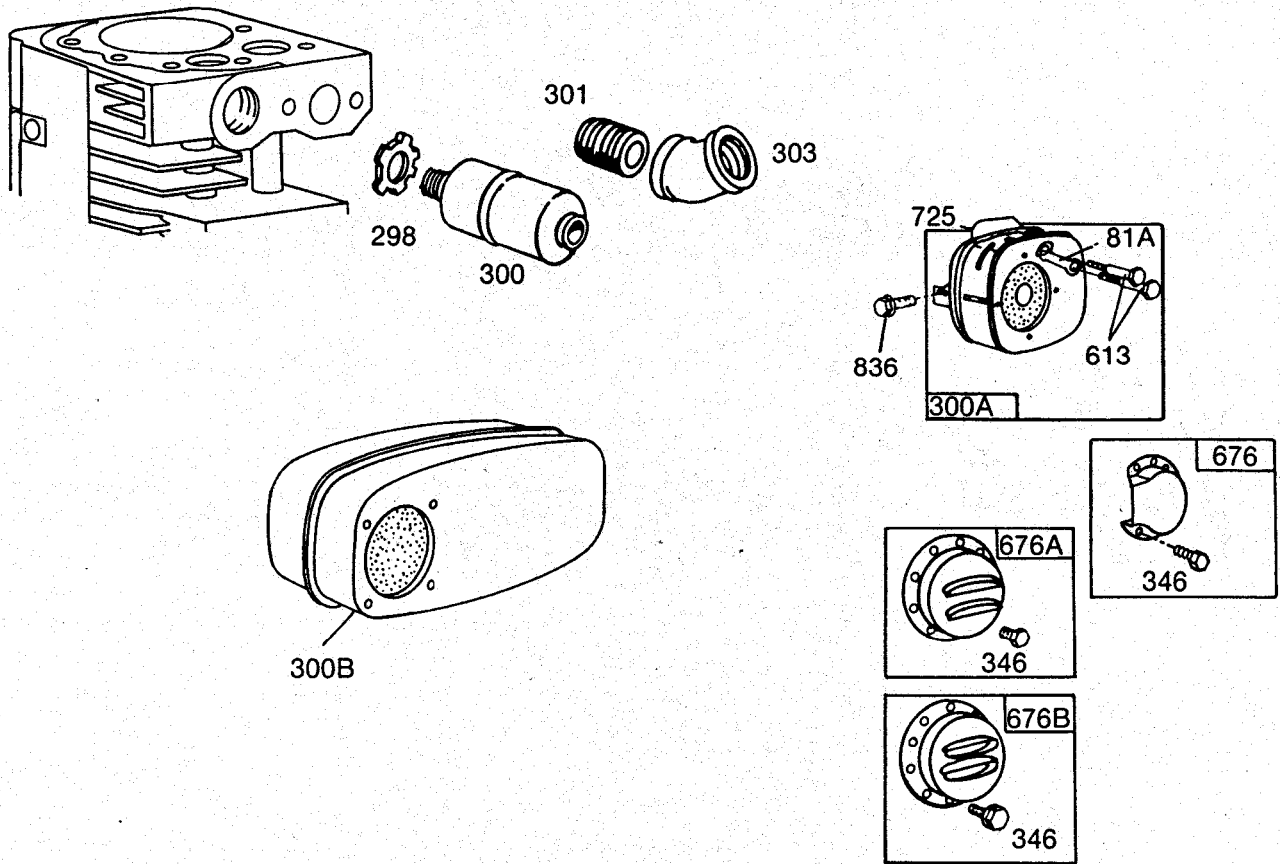
Assemblies include all parts shown in frames.



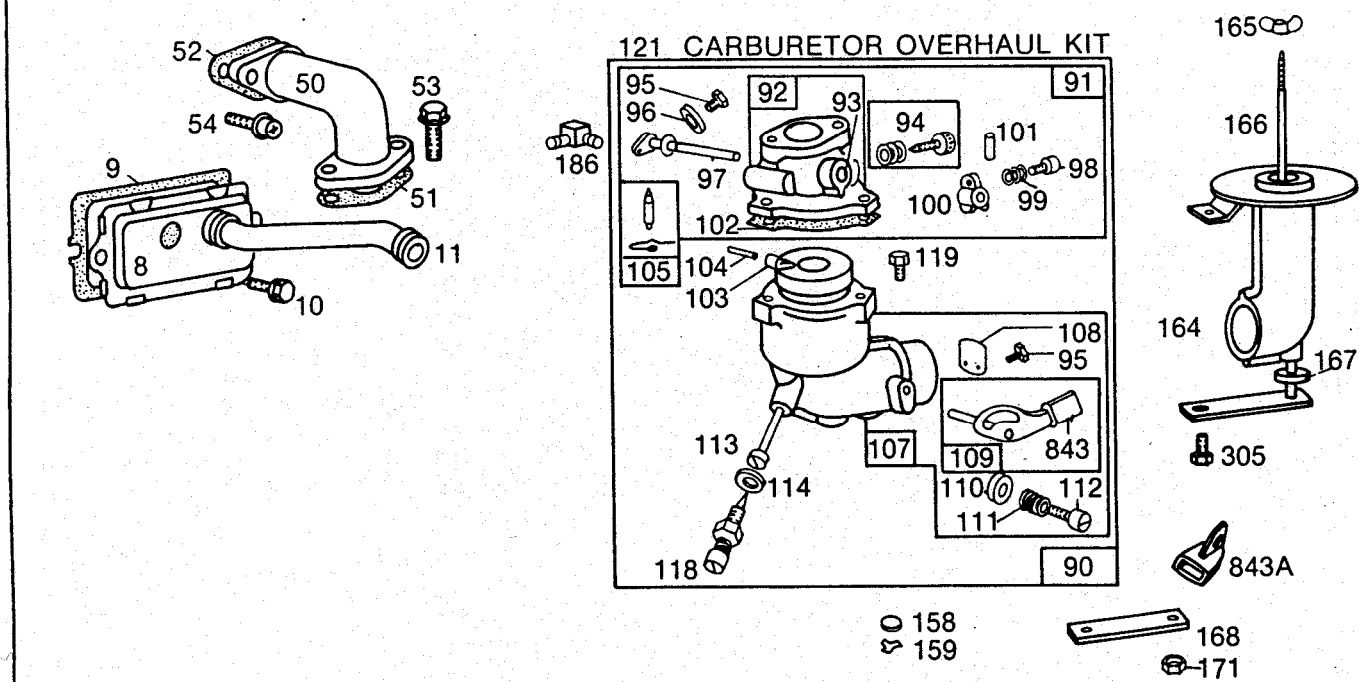
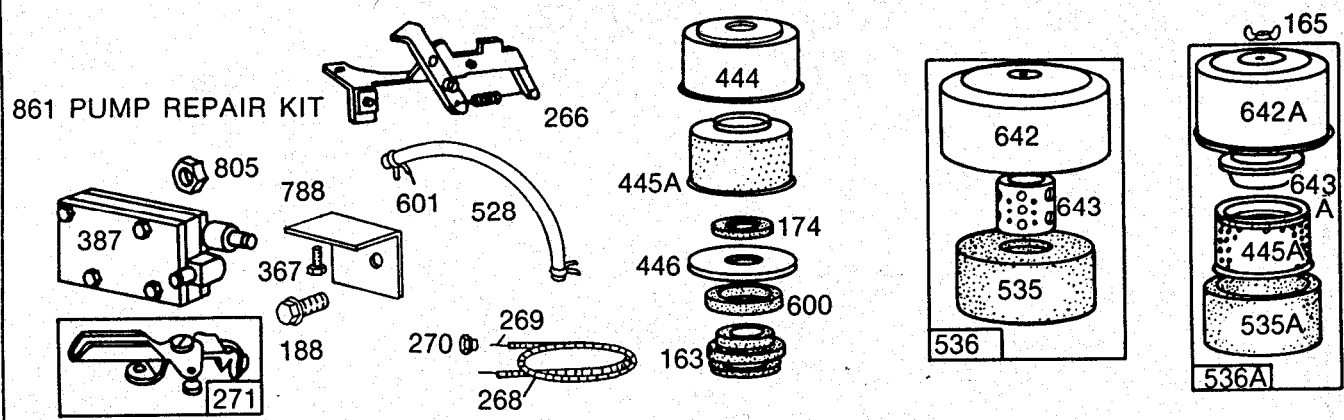
190400 to 190499



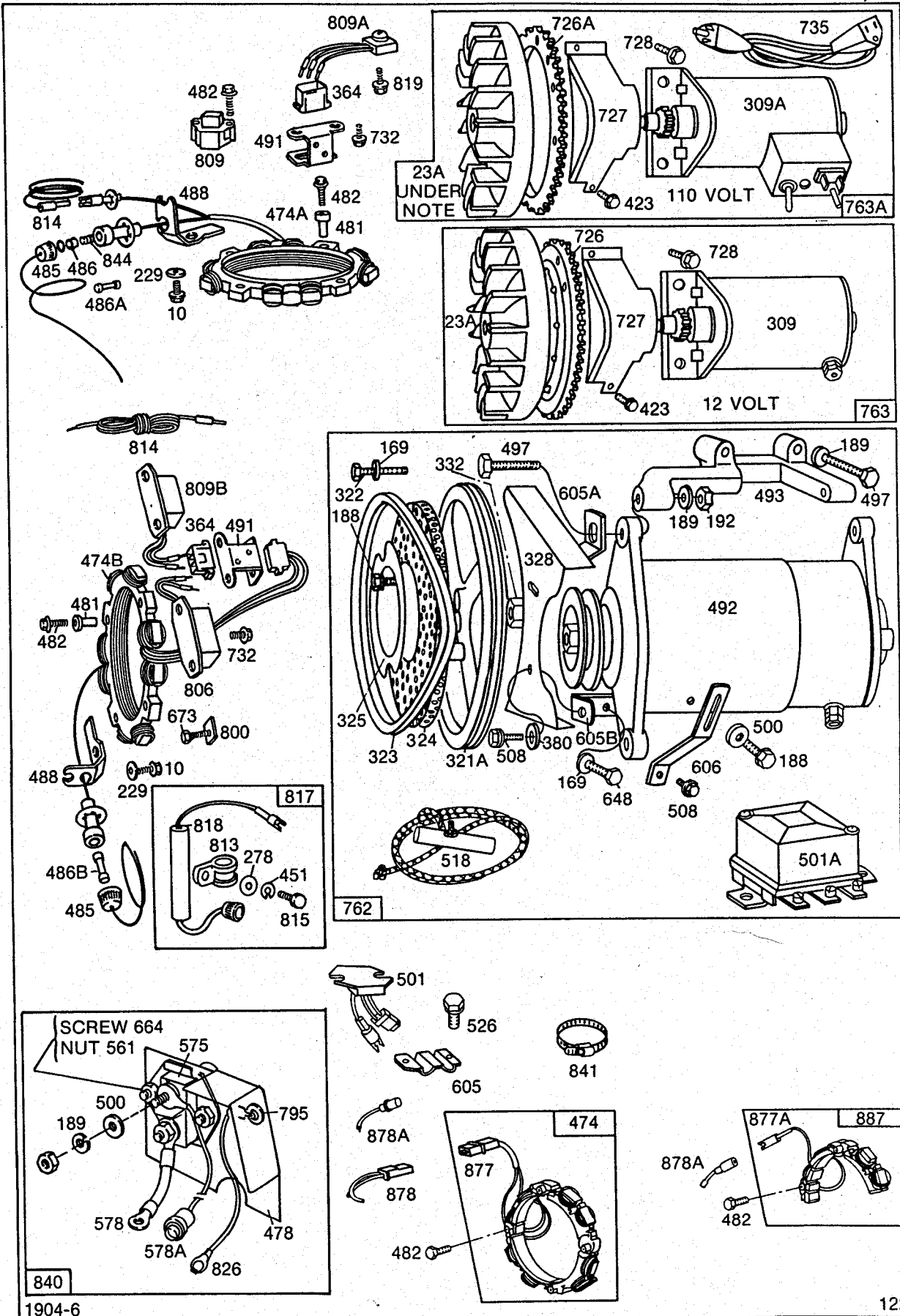
Assemblies include all parts shown in frames.



190400 to 190499



Assemblies include all parts shown in frames.

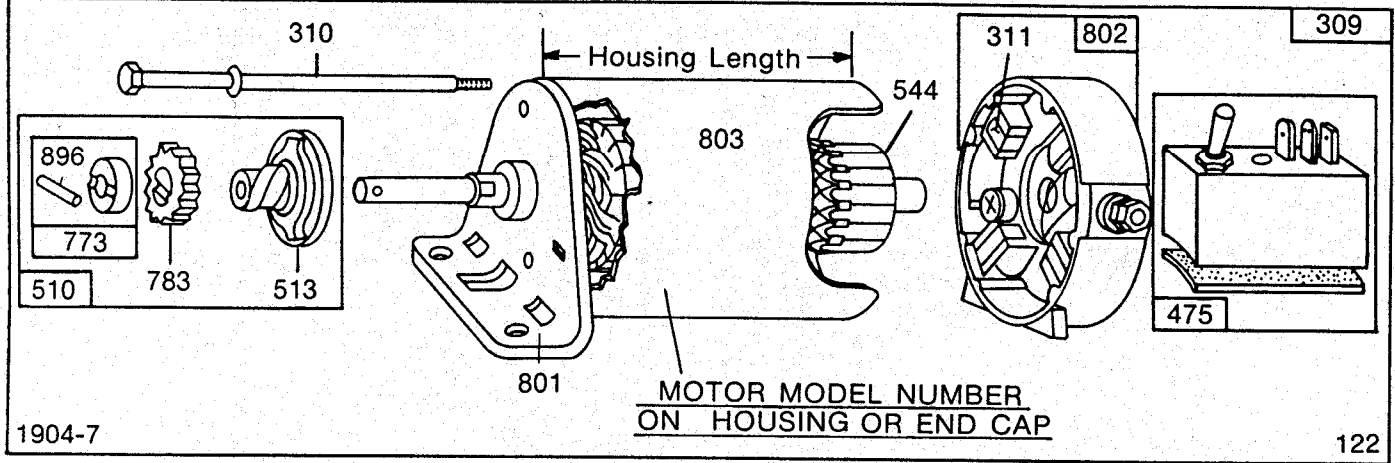


1904-6

122

Assemblies include all parts shown in frames.

190400 to 190499



Subject	Ref. No. 309	Ref. No. 510	Ref. No. 801	Ref. No. 544	Ref. No. 803	Ref. No. 802	Ref. No. 311	Ref. No. 310	Ref. No. 475
Starter Motor Mfr. and Motor Model Number	Motor and Drive Assy.	Drive Assembly	End Cap Assy. Drive	Armature Assembly	Housing Assembly	End Cap Assy. Commutator*	Brush Assembly	Thru Bolt Assembly	Rectifier Assembly
American Bosch									
12V SMH 12-A11	390307	390443	390444	390446	390447	390448	390449	390450	
12V SME 12-A8	390307R	390094	390092	390086	390097	390089		390080	
12V 01965-23-MO-30-SM	392749R	391461**	390444	391607	390447	390448	390449	390450	
110V SME 110-C3	393143R	390094	390091	390088	390096	390098	390081	390080	390099†
110V SME 110-C6	299556	390094	390092	390088	390095	390098	390081	390080	390084
110V SME 110-C8	299764	390094	390093	390088	390096	390098	390081	390080	390099
110V 06026-28-MO-30-SM	393143	390443	393682	393692	393781	393691		393690	393510
120V 06026-28-MO-30-SM	391756	390443	393682	393692	393781	393691		393690	393510
Mitsubishi									
12V MMO-5ML	390307R	299963	390454	390456	390452	390455	390990	299962	
12V MMO-4FL	390307R	299963	390454	390457	390453	390455	390990	299962	
12V MOOIT02271	392749R	391461**	391585	391584	390452	390455	390990	93771	
110V J282188	393143R	299963	299964	299968	299967	299965		299962	299966
Briggs & Stratton									
±12V 3-1/16"	390838	391461**	392061	390837	390849	390846	391705	391706	
±12V 3-1/16"	392749	391461**	392061	392747	392744	390846	391705	391706	
12V 3-21/32"	394805	391461**	394856	392747	393825	395537	395538	94003	

*Includes Brush Set

**Includes #391135 Clutch Assembly (Ref. No. 513)
#280104 Gear (Ref. No. 783)
#391462 Retainer and Pin (Ref. No. 773)
#93754 Roll Pin (Ref. No. 896)

†Uses #392247 Switch Shield Assembly

R - Replacement motor. Parts shown are for original equipment motor.

NOTE: Style Identification of 12 Volt Motors. New Style: Thru Bolt Heads are Located on the Brush End Head Side.

‡Old Style: Brush End Head is 13/16" Wide.