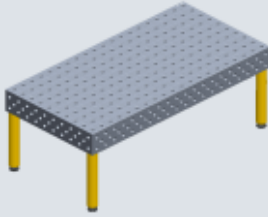
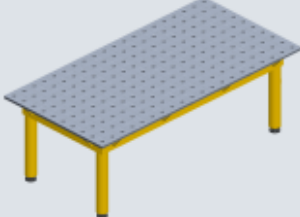
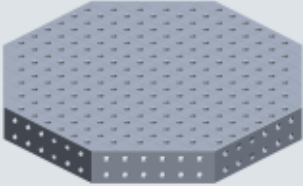


Product catalogue

BASIC TABLES

Basic tables include: 3D table series, 2D table series and octagonal table series, each series having a variety of different sizes, suitable for welding products of different sizes.

There are three types of tables made by different materials, high-quality alloy steel, gray cast iron (HT300) and 304 stainless steel. They can also be made according to special requirements. Flatness and parallelism of all basic tables reach $\pm 0.1/1000$, and vertical degree between side face and surface reaches level-7 precision ($\pm 0.1/200$); basic tables have good performances in impact resistance, abrasion resistance, splash proof and creep-deformation resistance. There are 100 x100mm (D28 series) or 50 x50mm grid lines (D16 series) on the surface of basic tables; the tables can be jointed and adjusted freely through modular so as to make a larger fixture table in vertical or horizontal form. An advantage of the larger fixture table lies in group welding of large workpieces.

3D table	2D table	Octagonal table
		

Parameters of D28 basic tables:

D28 series	3D table		2D table		Octagonal table	
Dimension	(steel)Number	(castl)Number	Dimension	Number	Dimension	Number
1000x1000x200	swk28-10001	swk28-10101	1000x1000x150	swk28-11001	800x800x200	swk28-12001
1200x1200x200	swk28-10002	swk28-10102	1200x1200x150	swk28-11002	1000x1000x200	swk28-12002
1500x1000x200	swk28-10003	swk28-10103	150 0x1000x150	swk28-11003	1200x1200x200	swk28-12003
1500x1500x200	swk28-10004	swk28-10104	1500x1500x150	swk28-11004	1500x1500x200	swk28-12004
2000x1000x200	swk28-10005	swk28-10105	2000x1000x150	swk28-11005	2000x2000x200	swk28-12005
2000x1500x200	swk28-10006	swk28-10106	2000x1500x150	swk28-11006	2400x2400x200	swk28-12006
2400x1200x200	swk28-10007	swk28-10107	2400x1200x150	swk28-11007		
3000x1500x200	swk28-10008	swk28-10108	3000x1500x150	swk28-11008		
4000x2000x200	swk28-10009	swk28-10109	4000x2000x200	swk28-11009		
6000x2000x200	swk28-10010		6000x2000x200	swk28-11010		
8000x2400x300	swk28-10011		8000x2400x300	swk28-11011		

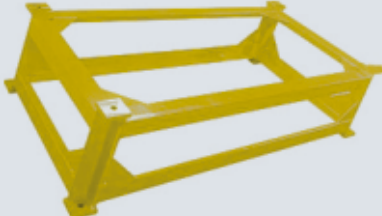

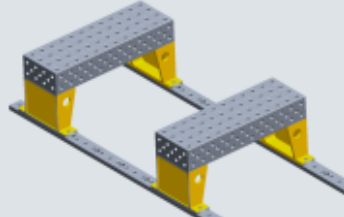
Parameters of D16 basic tables:

D16 series	3D table		2D table	Octagonal table	
Dimension	(steel)Number	(castl)Number	Number	Dimension	Number
1000x500x100	swk16-10001	swk16-10101	swk16-11001	600x600x100	swk16-12001
1000x1000x100	swk16-10002	swk16-10102	swk16-11002	800x800x100	swk16-12002
1200x800x100	swk16-10003	swk16-10103	swk16-11003	1000x1000x100	swk16-12003
1200x1200x100	swk16-10004	swk16-10104	swk16-11004	1200x1200x100	swk16-12004
1500x1000x100	swk16-10005	swk16-10105	swk16-11005	1500x1500x100	swk16-12005
1500x1500x100	swk16-10006	swk16-10106	swk16-11006	2000x2000x100	swk16-12006
2000x1000x100	swk16-10007	swk16-10107	swk16-11007		
2400x1200x100	swk16-10008	swk16-10108	swk16-11008		

Parameters of supporting parts:

					
Standard leg(D28/D16)		Fixable leg(D28/D16)		With guide pulleys(D28/D16)	
Dimension	Number	Dimension	Number	Dimension	Number
φ 88 × 200+50	swk28/16-71001	φ 88 × 200+50	swk28/16-71101	φ 88 × 200+150	swk28/16-71201
φ 88 × 300+50	swk28/16-71002	φ 88 × 300+50	swk28/16-71102	φ 88 × 300+150	swk28/16-71201
φ 88 × 500+50	swk28/16-71003	φ 88 × 500+50	swk28/16-71103	φ 88 × 500+150	swk28/16-71201
φ 88 × 600+50	swk28/16-71004	φ 88 × 600+50	swk28/16-71104		

Parameters of supporting parts:

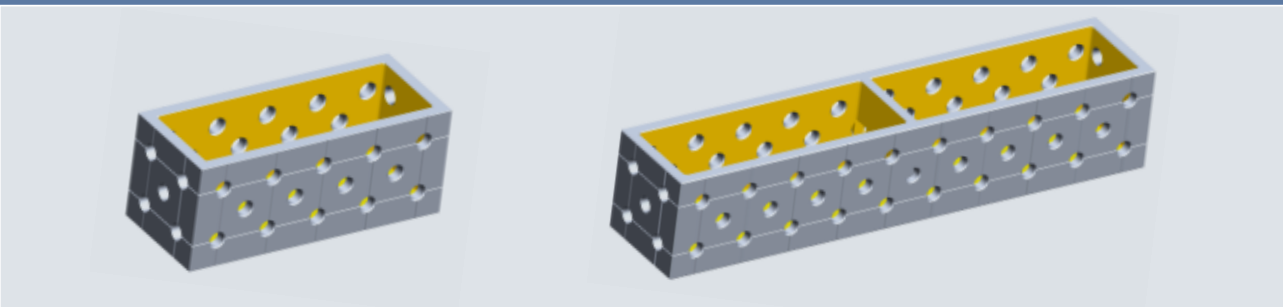
					
Spacer frame(D28/D16)		Scissor lift(D28/D16)		3D flexible rail	
Dimension	Number	Dimension	Number	Dimension	Number
1500x1000x400	swk28/16-71301	1500x1000	swk28/16-71401	2000x120x40	swk28-71501
1500x1500x400	swk28/16-71302	1500x1500	swk28/16-71402	2000x140x50	swk28-71502
2000x1000x400	swk28/16-71303	2000x1000	swk28/16-71403	3000x120x40	swk28-71503
2400x1200x400	swk28/16-71304	2400x1200	swk28/16-71404	3000x140x50	swk28-71504
3000x1500x400	swk28-71305	3000x1500	swk28-71405	5000x140x50	swk28-71505
4000x2000x400	swk28-71306	4000x2000	swk28-71406		

SUPPORTING PARTS

U-shaped case, L-shaped case, supporting angle, Corner module, frame bracket.

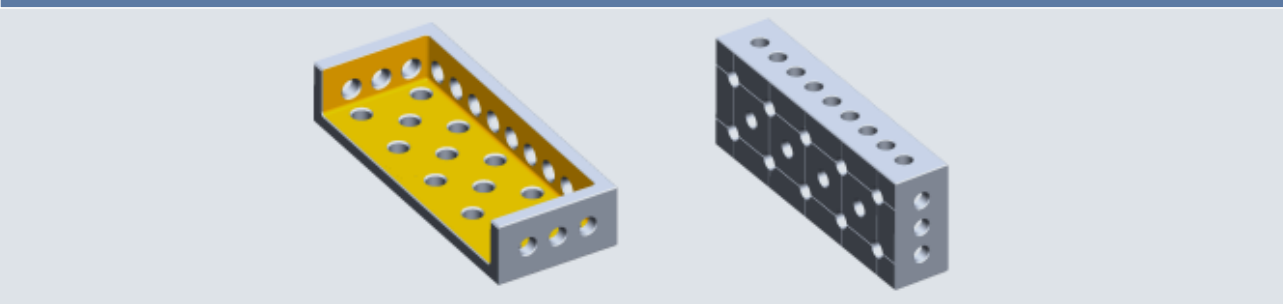
Supporting parts are mainly applied to connect tables, extend surfaces of tables, support and locate large welding products.

Parameters of U-shaped cases:



D28 series			D16 series	
Dimension	(steel)Number	(castl)Number	Dimension	Number
500x200x200	swk28-20001	swk28-20101	150x100x50	swk16-20001
1000x200x200	swk28-20002	swk28-20102	250x100x50	swk16-20002
1200x200x200	swk28-20003	swk28-20103	350x100x50	swk16-20003
1500x200x200	swk28-20004	swk28-20104	150x100x100	swk16-20004
2000x200x200	swk28-20005	swk28-20105	250x100x100	swk16-20005
2400x200x200	swk28-20006	swk28-20106	350x100x100	swk16-20006
3000x200x200	swk28-20007	swk28-20107	500x100x100	swk16-20007
4000x200x200	swk28-20008	swk28-20108	800x100x100	swk16-20008
1200x400x200	swk28-20009	swk28-20109	1000x100x100	swk16-20009
1500x400x200	swk28-20010	swk28-20110	1200x200x100	swk16-20010
2000x400x200	swk28-20011	swk28-20111	1500x200x100	swk16-20011
2400x400x200	swk28-20012	swk28-20112	2000x200x100	swk16-20012

Parameters of L-shaped cases:



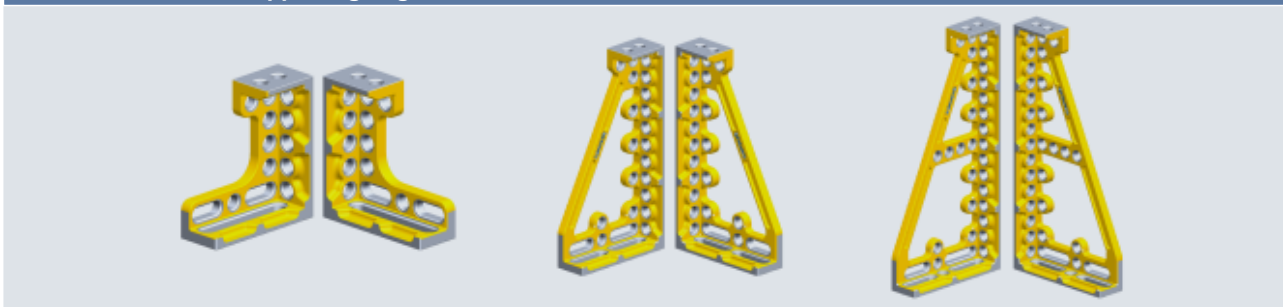
D28 series		D16 series	
Dimension	Number	Dimension	Number
500x200x200	swk28-21001	150x100x50	swk16-21001
1000x200x200	swk28-21002	250x100x50	swk16-21002
1200x200x200	swk28-21003	350x100x50	swk16-21003
1500x200x200	swk28-21004	500x100x50	swk16-21004

SUPPORTING PARTS

U-shaped case, L-shaped case, supporting angle, Corner module, frame bracket.

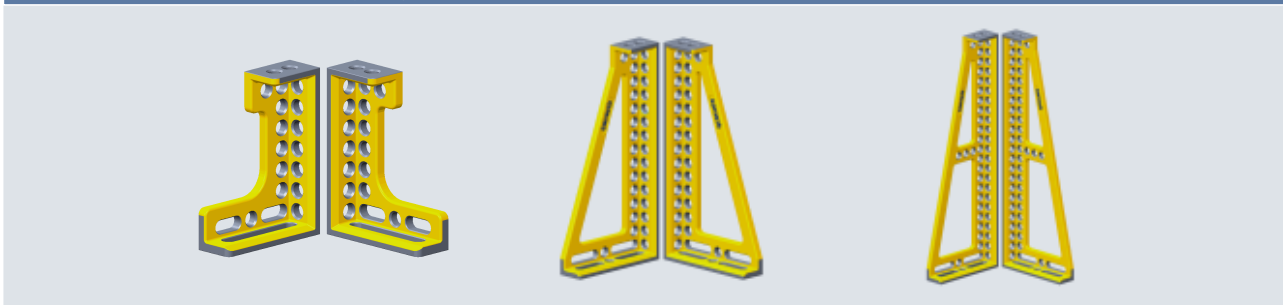
Supporting parts are mainly applied to connect tables, extend surfaces of tables, support and locate large welding products.

D28 Parameters of supporting angles:



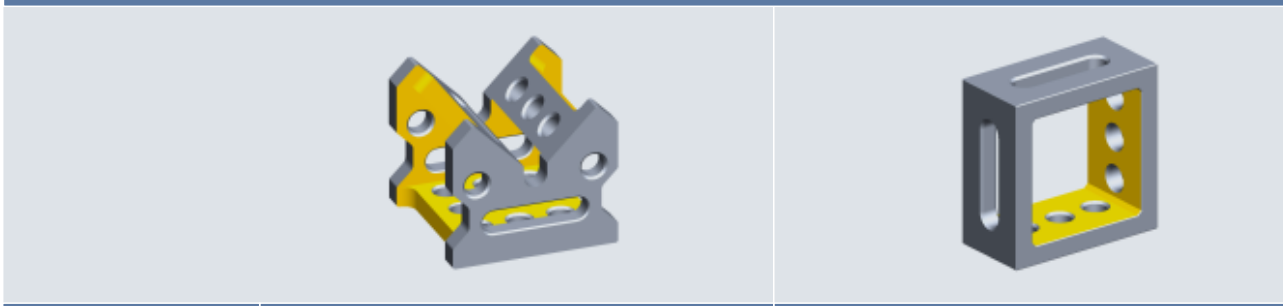
Dimension	Number	Dimension	Number	Dimension	Number
275x100x300-L	swk28-22101	325x100x600-L	swk28-22103	375x100x800-L	swk28-22105
275x100x300-R	swk28-22102	325x100x600-R	swk28-22104	375x100x800-R	swk28-22106

D16 Parameters of supporting angles:



Dimension	Number	Dimension	Number	Dimension	Number
150x50x200-L	swk16-22101	200x50x400-L	swk16-22103	200x50x600-L	swk16-22105
150x50x200-R	swk16-22102	200x50x400-R	swk16-22104	200x50x600-R	swk16-22106

Parameters of angle connecting block and frame bracket



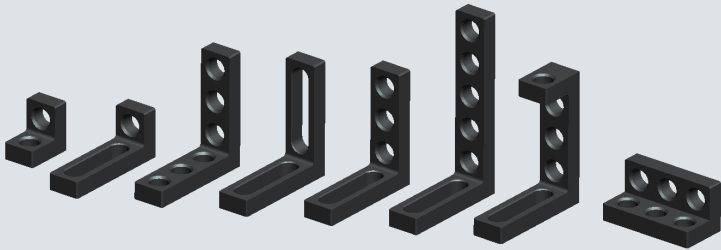
Corner module			Frame bracket	
Series	Dimension	Number	Dimension	Number
D28 series	200x200x175	swk28-23001	200x200x100	swk28-24001
D16 series	100x100x75	swk16-23001	100x100x50	swk16-24001

LOCATING PARTS

Locating parts: locating angle, locating square, square angle, V-shaped locating part, eccentric locating plate.

Locating parts, made by high-quality alloy steel, after corresponding heat treatment, have such functions as welding slag prevention and abrasion resistance. Locating parts can be fixed on table quickly and accurately through rapid locking bolt, and are able to locate and support all kinds of welding products efficiently and quickly. Different series of locating parts have a variety of dimensions, meeting the complicated needs of welding processes.

Parameters of locating angles:



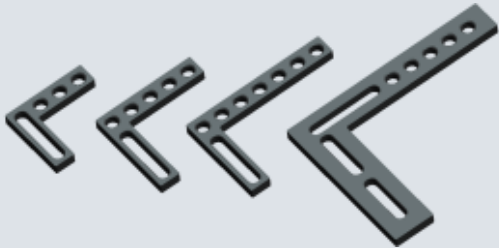
D28 series		D16 series	
Dimension	Number	Dimension	Number
75x50x75	swk28-30001	40x30x40	swk16-30001
175x50x75	swk28-30002	90x30x40	swk16-30002
175x50x175-kk	swk28-30003	90x30x90-kk	swk16-30003
175x50x175-cc	swk28-30004	90x30x90-cc	swk16-30004
175x50x175-kc	swk28-30005	90x30x90-kc	swk16-30005
175x50x275	swk28-30006	90x30x140	swk16-30006
175x50x200	swk28-30007	90x40x40	swk16-30007
175x75x75	swk28-30008		

Parameters of locating squares:



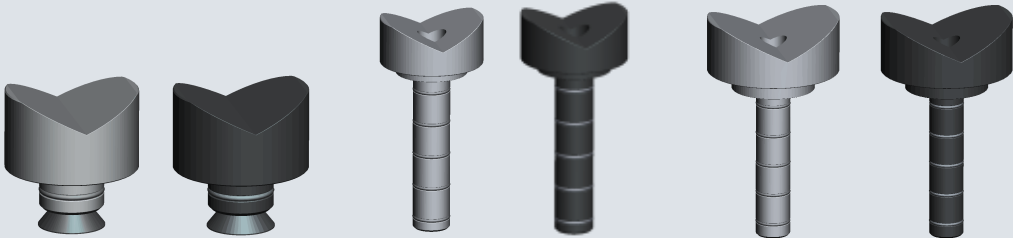
D28 series		D16 series	
Dimension	Number	Dimension	Number
100x50x25	swk28-31001	55x30x12	swk16-31001
150x50x25	swk28-31002	90x30x12	swk16-31002
225x50x25	swk28-31003	115x30x12	swk16-31003
300x50x25	swk28-31004	150x30x12	swk16-31004
400x50x25	swk28-31005	190x30x12	swk16-31005
500x75x25	swk28-31006	240x50x12	swk16-31006
800x100x25	swk28-31007	300x50x12	swk16-31007
1000x100x25	swk28-31008	400x50x12	swk16-31008

Parameters of square angles:



D28 series		D16 series	
Dimension	Number	Dimension	Number
175x200x25	swk28-32001	105x105x12	swk16-32001
225x250x25	swk28-32002	130x130x12	swk16-32002
225x300x25	swk28-32003	155x180x12	swk16-32003
375x500x25	swk28-32004	200x275x12	swk16-32004

Parameters of V-shaped locating parts:



D28 series		D16 series	
Dimension	Number	Dimension	Number
φ 58/130° carbon steel	swk28-33001	φ 50/130° carbon steel	swk16-33001
φ 58/130° aluminum alloy	swk28-33002	φ 50/130° aluminum alloy	swk16-33002
φ 80/130° carbon steel	swk28-33003	φ 65/130° carbon steel	swk16-33003
φ 80/130° aluminum alloy	swk28-33004	φ 65/130° aluminum alloy	swk16-33004
φ 110/130° carbon steel	swk28-33005	φ 80/130° carbon steel	swk16-33005
φ 110/130° aluminum alloy	swk28-33006	φ 80/130° aluminum alloy	swk16-33006

Eccentric locating plates:





D28 series		D16 series	
Dimension	Number	Dimension	Number
50- φ 75x25	swk28-34001	25- φ 50x12	swk16-34001
75- φ 100x25	swk28-34002	50- φ 75x12	swk16-34002

ADJUSTING PARTS

Adjusting parts: height adjuster, adjusting spacer

Adjusting parts are mainly used to fine-tune the location, and can be used together with V-shaped locating block in hole-axis way, in order to meet more complicated needs of welding processes. Both adjusting block and adjusting spacer are made by high-quality alloy steel, which are abrasion resistance after special heat treatment and splash-preventing treatment. Thus, the repeated installation precision of each adjusting part is reassured.

Parameters of height adjuster and adjusting spacer:

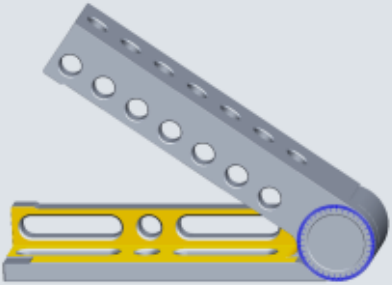
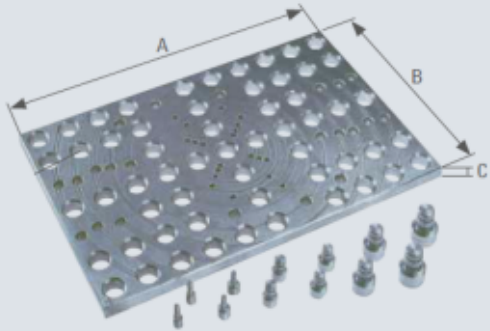
				
series	Dimension	Number	Dimension	Number
D28 series	φ 78x75-100	swk28-40001	1、2、2.5、3、4、5、10、20、40、50+L175mm	swk28-40101
D16 series	φ 48x60-90	swk16-40001	1、2、2.5、3、4、5、10、20、40、50+L125mm	swk16-40101

COMPOUNDS

Compounds: angle compound(angle adjuster), supporting compound (supporting leg, supporting frame, hydraulic lifter, hole trajectory), flange locating component, etc..

Swivel and inclination angle can be produced with hydraulic damping coefficient and high precision calibration, which is convenient, fast and accurate to adjust angles. Its adjustment range is 0-225 °, with difference of any adjacent holes no more than 0.05 mm. Adapter plates for flanges is a set of multi-functional locating system, which allows European steel-pipe flange or American steel-pipe flange of different series and specifications to be located and welded on the same fixture.

Parameters of compounds:

Swivel and inclination angle			Adapter plates for flanges		
					
series	Dimension	Number	series	Dimension	Number
D28 series	500x100x100	swk28-70001	D28系列	350x250x25	swk28-72001
D16 series	250x50x50	swk16-70001		550x350x25	swk28-72002

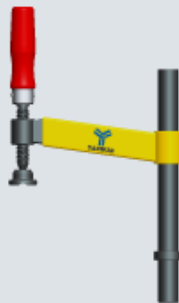


CLAMPING DEVICE

Clamping parts: fixed clamping device, 180° elastic clamping device, 45° elastic clamping device, 90°clamping device, elbow rapid clamping device.

According to different clamping ways and directions, clamping devices can be divided into fixed clamping device, 180°elastic clamping device, 45°elastic clamping device, 90°clamping device and rapid clamping device; meanwhile, according to different operating handles, each kind of clamping device is divided into rubber-handle clamping device, mobile-handle clamping device and hexagon-bolt clamping device.

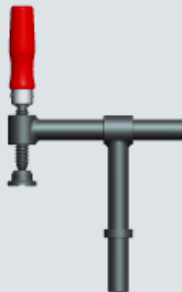
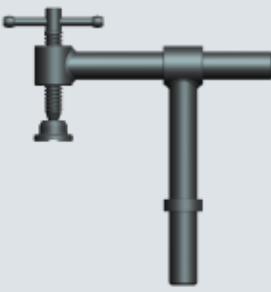

Clamping device is used on the fixed workpiece, fasten it in the corresponding position and prevent it from shifting, as well as prevent welding deformation. In selecting clamping devices, locating space and angle must be taken into consideration, and clamping devices with different operating handles and different clamping directions can be chosen to ensure flexibility and reliability. Because all the clamping spacers on different clamping devices are interchangeable, so you can choose spacers made by different materials (alloy steel, aluminum alloy, stainless steel, nylon, etc.) according to the welding occasion.

Parameters of D28 series clamping devices:

Fixed clamping device-rubber-handle	Fixed clamping device-mobile-handle	Fixed clamping device-hexagon-bolt
		

D28 series							
Dimension		Number		Dimension		Number	
150x320		swk28-50001		150x320		swk28-50101	
200x320		swk28-50002		200x320		swk28-50102	
				200x320		swk28-50202	

D16 series							
Dimension		Number		Dimension		Number	
120x200		swk16-50001		120x200		swk16-50101	
				120x200		swk16-50201	
				120x200		swk16-50201	

180° elastic clamping device-rubber-handle		180° elastic clamping device-mobile-handle		180° elastic clamping device-hexagon-bolt	
					
D28 series					
Dimension	Number	Dimension	Number	Dimension	Number
220x220	swk28-51001	220x220	swk28-51101	220x220	swk28-51201
220x320	swk28-51002	220x320	swk28-51102	220x320	swk28-51202
D16 series					
Dimension	Number	Dimension	Number	Dimension	Number
160x200	swk16-51001	160x200	swk16-51101	160x200	swk16-51201




CLAMPING PARTS




Clamping parts: fixed clamping device, 180° elastic clamping device, 45° elastic clamping device, 90° clamping device, elbow rapid clamping device.

According to different clamping ways and directions, clamping devices can be divided into fixed clamping device, 180° elastic clamping device, 45° elastic clamping device, 90° clamping device and rapid clamping device; meanwhile, according to different operating handles, each kind of clamping device is divided into rubber-handle clamping device, mobile-handle clamping device and hexagon-bolt clamping device.

Clamping device is used on the fixed workpiece, fasten it in the corresponding position and prevent it from shifting, as well as prevent welding deformation. In selecting clamping devices, locating space and angle must be taken into consideration, and clamping devices with different operating handles and different clamping directions can be chosen to ensure flexibility and reliability. Because all the clamping spacers on different clamping devices are interchangeable, so you can choose spacers made by different materials (alloy steel, aluminum alloy, stainless steel, nylon, etc.) according to the welding occasion.

Parameters of D28 series clamping devices:

45° elastic clamping device-rubber-handle		45° elastic clamping device-mobile-handle		45° elastic clamping device-hexagon-bolt	
					
D28 series					
Dimension	Number	Dimension	Number	Dimension	Number
220x220	swk28-52001	220x220	swk28-52101	220x220	swk28-52201
220x320	swk28-52002	220x320	swk28-52102	220x320	swk28-52202
D16 series					
Dimension	Number	Dimension	Number	Dimension	Number
160x200	swk16-52001	160x200	swk16-52101	160x200	swk16-52201

90° clamping device-rubber-handle		Round-base-rapid clamping device		Square-base-rapid clamping device	
					
D28 series					
Dimension	Number	Dimension	Number	Dimension	Number
220x320	swk28-53001	sw-12132	swk28-54001	sw-12132	swk28-54101
		sw-305-EM	swk28-54002	sw-305-EM	swk28-54002
D16 series					
Dimension	Number	Dimension	Number	Dimension	Number
160x200	swk16-53001	sw-12132	swk16-54001	sw-12132	swk16-54101
		sw-305-EM	swk16-54002	sw-305-EM	swk16-54002

LOCKING PARTS

Locking parts: rapid locking bolt, countersunk rapid locking bolt, handle-type locking bolt, countersunk locking bolt, handle locking bolt, rapid locating bolt, magnetic bolt.

All the locating components in flexible and combined 3D welding fixture need to be fixed by locking bolts which have the locating precision of $\phi 28h6$. Locking bolt is made by high-quality alloy tool steel after quenching treatment, with surface hardness up to 45 HRC. Rapid locking bolt uses five bearing steel ball to locate, so it has the following advantages: large contact area, accurate locating precision, convenient to assemble and disassemble, durability, etc..

Parameters of locking parts:

Rapid locking bolt		Countersunk rapid locking bolt		Countersunk locking bolt	
					
D28 series					
Dimension	Number	Dimension	Number	Dimension	Number
φ 28x50	swk28-60001	φ 28x50	swk28-60101	φ 28x50	swk28-60201
φ 28x75	swk28-60002	φ 28x75	swk28-60102	φ 28x75	swk28-60202
D16 series					
Dimension	Number	Dimension	Number	Dimension	Number
φ 16x24	swk16-60001	φ 16x24	swk16-60101	φ 16x24	swk16-60201
φ 16x36	swk16-60002	φ 16x36	swk16-60102	φ 16x36	swk16-60202
Handle locking bolt		Locating bolt		Magnetic bolt	
					
D28 series					
Dimension	Number	Dimension	Number	Dimension	Number
φ 28x50	swk28-60301	φ 28x50	swk28-60401	φ 28x25	swk28-60501
D16 series					
Dimension	Number	Dimension	Number	Dimension	Number
φ 16x24	swk16-60301	φ 16x24	swk16-60401	φ 16x12	swk16-60501

OTHER
PARTS

90° corner cover			45° corner cover		
					
series	Dimension	Number	series	Dimension	Number
D28 series	φ 28x90°	swk28-80001	D28 series	φ 28x45°	swk28-80101
D16 series	φ 16x90°	swk16-80001	D16 series	φ 16x45°	swk16-80101
Two-point clamping bridge			Three-point clamping bridge		
					
series	Dimension	Number	series	Dimension	Number
D28 series	170x35x20	swk28-81001	D28 series	170x35x20	swk28-81101
D16 series	110x20x12	swk16-81001	D16 series	110x20x12	swk16-81101
Transport ring			Accessory cart		
					
series	Dimension	Number	series	Dimension	Number
D28 series	190x130x165	swk28-82001	D28 series	1000x600x1100	swk28-83001
D16 series	140x140x100	swk16-82001	D16 series	1000x600x1100	swk16-83001

ASSEMBLY
TOOLS

Ecological anti-spatter spray		Bench stone	
			
Dimension	Number	Dimension	Number
5L	swk28-90001	200 × 50 × 40	swk28-90101
	swk16-90001		swk16-90101
Pump bottle		Internal hexagonal wrench	
			
Dimension	Number	Dimension	Number
1L	swk28-90201	14#、12#、10#	swk28-90301
	swk16-90201	12#、10#、8#	swk16-90301
Steel brush		Ground connector	
			
Dimension	Number	Dimension	Number
φ 30x150	swk28-90401	φ 28x500A	swk28-90501
φ 18x150	swk16-90401	φ 16x500A	swk16-90501