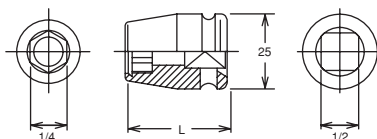


14139 ○ Bit Holder Klingenhalter Porte-embouts

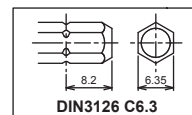


	D ₁ (mm)	D ₂ (mm)	L (mm)	(g)	(pcs.)	
14139-1/4	11	25	35	62	10	*1

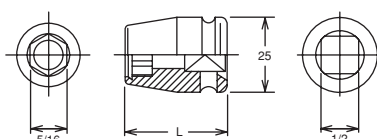
*1 C-Ring=1401C, Pin/O-Ring=1401A/B

➔ P250-251

For DIN3126 C6.3 Bits
Für DIN3126 C6.3 Bits
Pour DIN3126 C6.3 Embouts



14140 ○ Bit Holder Klingenhalter Porte-embouts

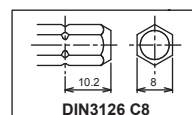


	D ₁ (mm)	D ₂ (mm)	L (mm)	(g)	(pcs.)	
14140-5/16	14	25	35	62	10	*1

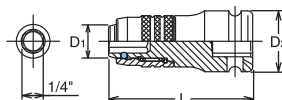
*1 C-Ring=1401C, Pin/O-Ring=1401A/B

➔ P250-251

For DIN3126 C8 Bits
Für DIN3126 C8 Bits
Pour DIN3126 C8 Embouts



14142-D6.3 ○ Bit Holder (Quick Release) Kingenhalter (Schnellwechselfutter) Porte embouts (mandrin autoserrant)

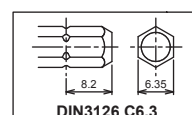


	D ₁ (mm)	D ₂ (mm)	L (mm)	(g)	(pcs.)	
14142-D6.3	16	25	55	97	10	*1

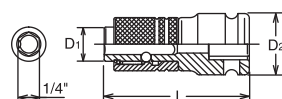
*1 C-Ring=1401C, Pin/O-Ring=1401A/B

➔ P250-251

For DIN3126 C6.3 Bits
Für DIN3126 C6.3 Bits
Pour DIN3126 C6.3 Embouts



14142-F6.3 ○ Bit Holder (Quick Release) Kingenhalter (Schnellwechselfutter) Porte embouts (mandrin autoserrant)

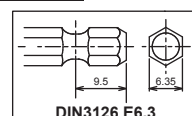


	D ₁ (mm)	D ₂ (mm)	L (mm)	(g)	(pcs.)	
14142-F6.3	16.5	25	55	100	10	*1

*1 C-Ring=1401C, Pin/O-Ring=1401A/B

➔ P250-251

For DIN3126 E6.3 Bits
Für DIN3126 E6.3 Bits
Pour DIN3126 E6.3 Embouts



Lock & Quick Release

